

LIGHT CONSTRUCTION

WHAT ARE WE TALKING ABOUT?

Lightweight construction is based on buildings whose structure is a skeleton made of timber, metal or concrete to which are attached non-load-bearing facade and partition systems. This type of construction reduces the environmental footprint of buildings and optimizes the consumption of resources while ensuring high performance and productivity.

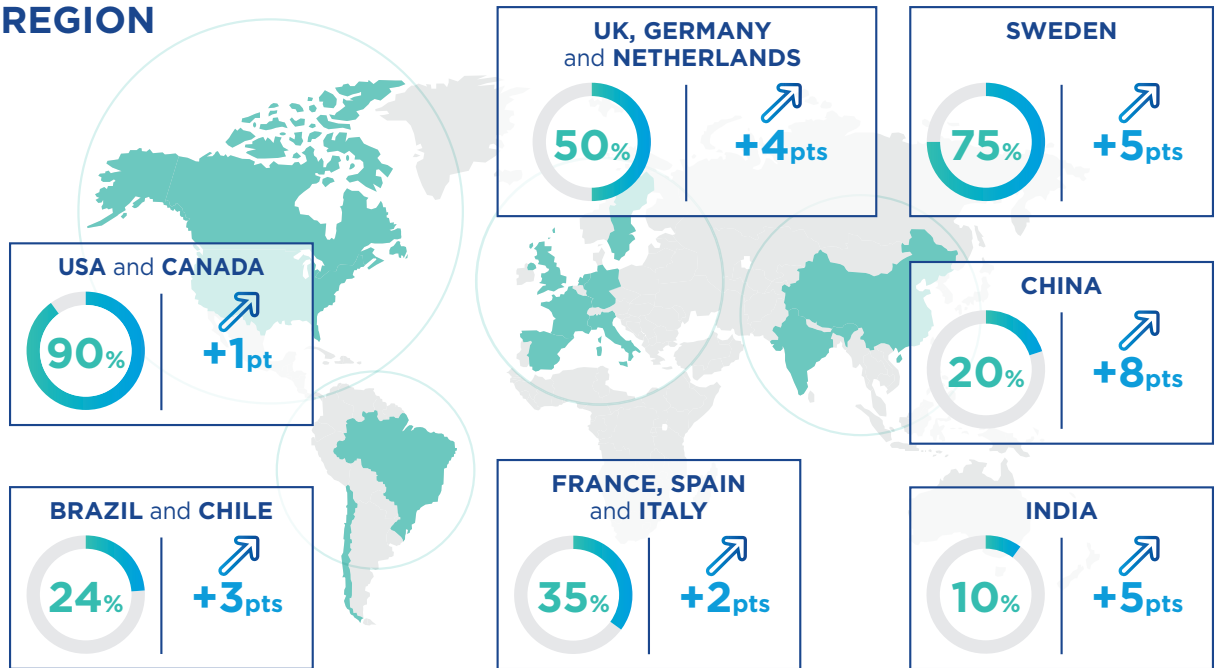
ZOOM ON THE MARKET

MARKET BY REGION



Share of light construction

Outperformance (additional growth points) vs traditional construction



BENEFITS



Up to **-50%** embedded carbon⁽¹⁾

Up to **-50%** raw materials

Up to **50% lighter** than traditional construction

From **20 to 70%** gain in productivity⁽²⁾

SAINT-GOBAIN FOCUS

A BUOYANT MARKET FOR SAINT-GOBAIN

40% of Group sales

LIGHT CONSTRUCTION:

- **Mineral wools** are easily installed into the walls (elimination of thermal bridges and flexibility) unlike rigid products often more used in traditional construction for exterior insulation.

2 to 3 x more products

- **Plasterboard** is used for interior partitions⁽³⁾ and more and more for exterior facades.

(1) In the building structure and envelope throughout the life cycle of the materials.

(2) Productivity gains in certain stages of construction (pouring of screeds, assembly of walls or facades, etc.).

(3) Unlike traditional construction outside France.