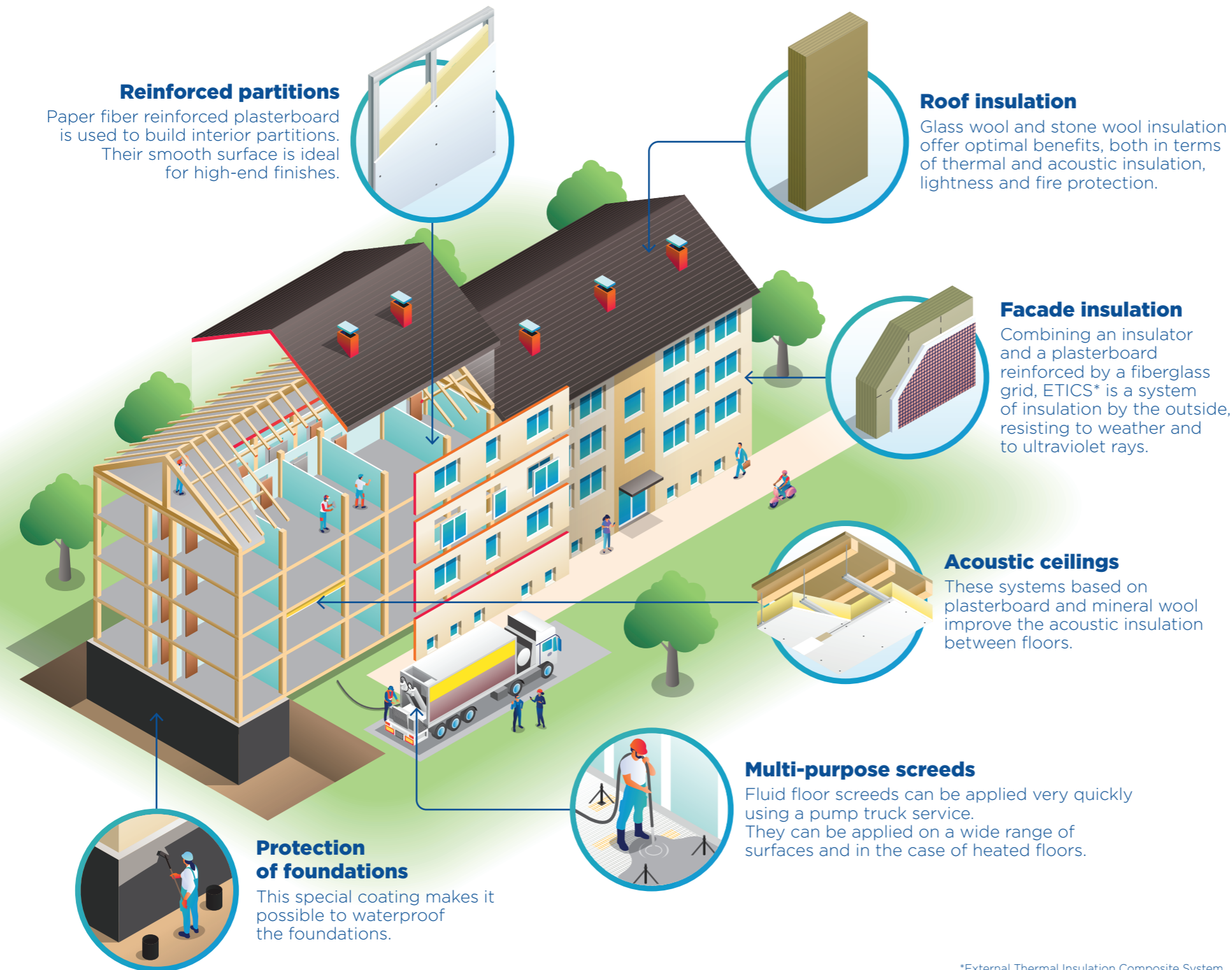


SAINT-GOBAIN SOLUTIONS FOR LIGHT CONSTRUCTION

Multi-family housing



PERFORMANCE AND SUSTAINABILITY⁽¹⁾

COST & PRODUCTIVITY

3 month
saved on construction time⁽²⁾

COMFORT

Sound transmission **divided by 2**
(-6 decibels)

CO₂ FOOTPRINT

-23%
of CO₂ emissions over the life cycle of the building

RESOURCES

58%
of recyclable materials (in tons) on Saint-Gobain solutions⁽³⁾

(1) Timber-frame housing with interior steel studs, compared to a sand-lime brick dwelling. (2) On a specific case study. (3) Mineral wool, plaster, glass, mortars and screeds.

*External Thermal Insulation Composite System.