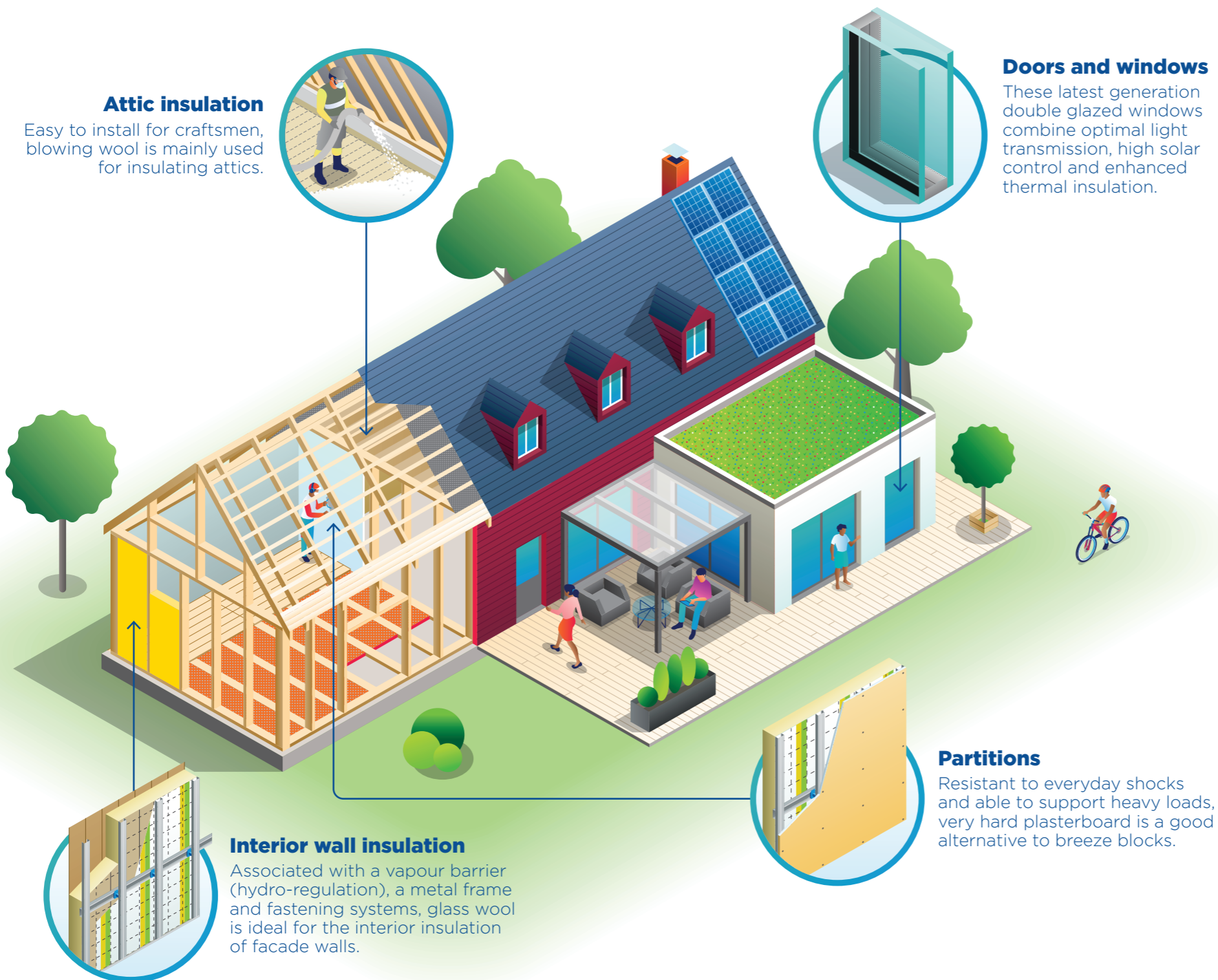


SAINT-GOBAIN SOLUTIONS FOR LIGHT CONSTRUCTION

Single-family housing



Attic insulation

Easy to install for craftsmen, blowing wool is mainly used for insulating attics.

Doors and windows

These latest generation double glazed windows combine optimal light transmission, high solar control and enhanced thermal insulation.

Interior wall insulation

Associated with a vapour barrier (hydro-regulation), a metal frame and fastening systems, glass wool is ideal for the interior insulation of facade walls.

Partitions

Resistant to everyday shocks and able to support heavy loads, very hard plasterboard is a good alternative to breeze blocks.

PERFORMANCE AND SUSTAINABILITY⁽¹⁾

For comparable comfort conditions

COST & PRODUCTIVITY

+30%
gain in productivity⁽²⁾

CO₂ FOOTPRINT

-96%
CO₂ emissions linked to partitions and structure⁽²⁾

RESOURCES

-80%
of wall weight⁽²⁾

(1) Timber frame housing, compared with a concrete structure and breeze block walls.
(2) On the exterior side walls.