

# SUSTAINABILITY BRIEFS FOREST OUR COMMITMENT

## FORESTS AT THE HEART OF BALANCE

Forests cover 31% of the earth's surface and are essential to global ecological balance. They support communities that depend on their resources, while hosting remarkable biodiversity and playing a decisive role in climate regulation.

### From protecting forests to fighting deforestation

Forest resources are a challenge for Saint-Gobain across its entire value chain, though they do not represent a major risk. They have been covered by a dedicated policy for over 15 years, which has been gradually strengthened and adapted over time.



**30% OF KNOWN TERRESTRIAL SPECIES LIVE IN FORESTS**

Saint-Gobain mainly uses two types of forest resources



### TIMBER

Used mainly for construction timber, particularly in our trading activities through brands such as DISPANO and POINT.P.



### WOOD PULP\*

Used in packaging and paper for the manufacture of some of our solutions, notably in the Gypsum, for plasterboards, and Abrasives business lines.

**+ 17 Mha**  
EXPLOITED PER YEAR FOR OUR PURCHASES, EQUIVALENT TO 1.7 TIMES THE SURFACE AREA OF THE CITY OF PARIS



**Thomas Lafon**  
*Timber & Panels Product Manager at POINT.P*

**At Saint-Gobain, and therefore at POINT.P, we have a responsibility: to protect forests, biodiversity, and local communities.**

\* Products derived from wood fiber, from forest resources to finished products, including pulp, paper, cardboard, insulation, cellulose-based packaging and other derivatives..



# OUR POLICY

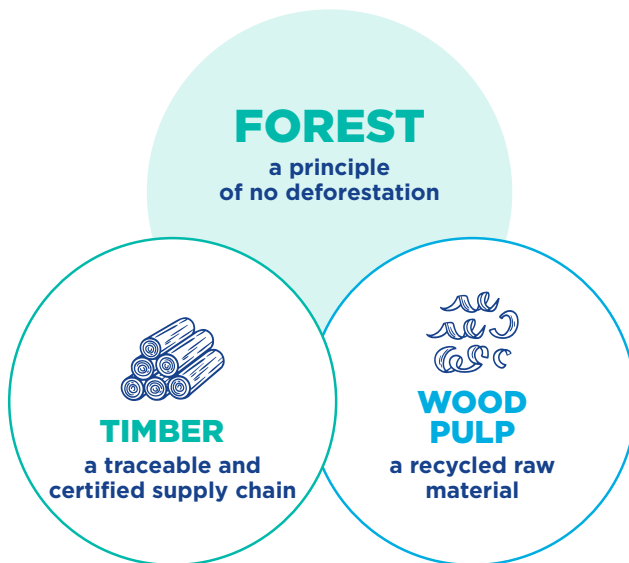
Saint-Gobain has adopted a Forest Policy, supplemented by a Wood Pulp Policy and a Timber Policy. The Timber Policy, first published in 2008, and the Wood Pulp Policy enable us to secure our timber and wood pulp purchases and thus more specifically control the main risks of deforestation generated by the Group's purchases.

Each policy is based on a **due diligence\* approach**, a process for identifying, preventing, and mitigating actual and potential negative impacts associated with our operations and supply chain.

As part of our due diligence process, we carry out a risk mapping for each raw material. To do this, we identify specific criteria for each raw material in order to assess the risks. These criteria include:



In its Forest Policy, Saint-Gobain has adopted a principle of no deforestation across its value chain.



**COUNTRY OF ORIGIN**



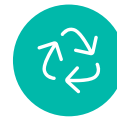
**COMPLEXITY OF THE VALUE CHAIN**



**WOOD SPECIES**



**HARVESTING METHOD**



**RECYCLED CONTENT**

For each material, purchasing criteria are defined in order to reduce the identified risks.

## A GLOBAL FRAMEWORK

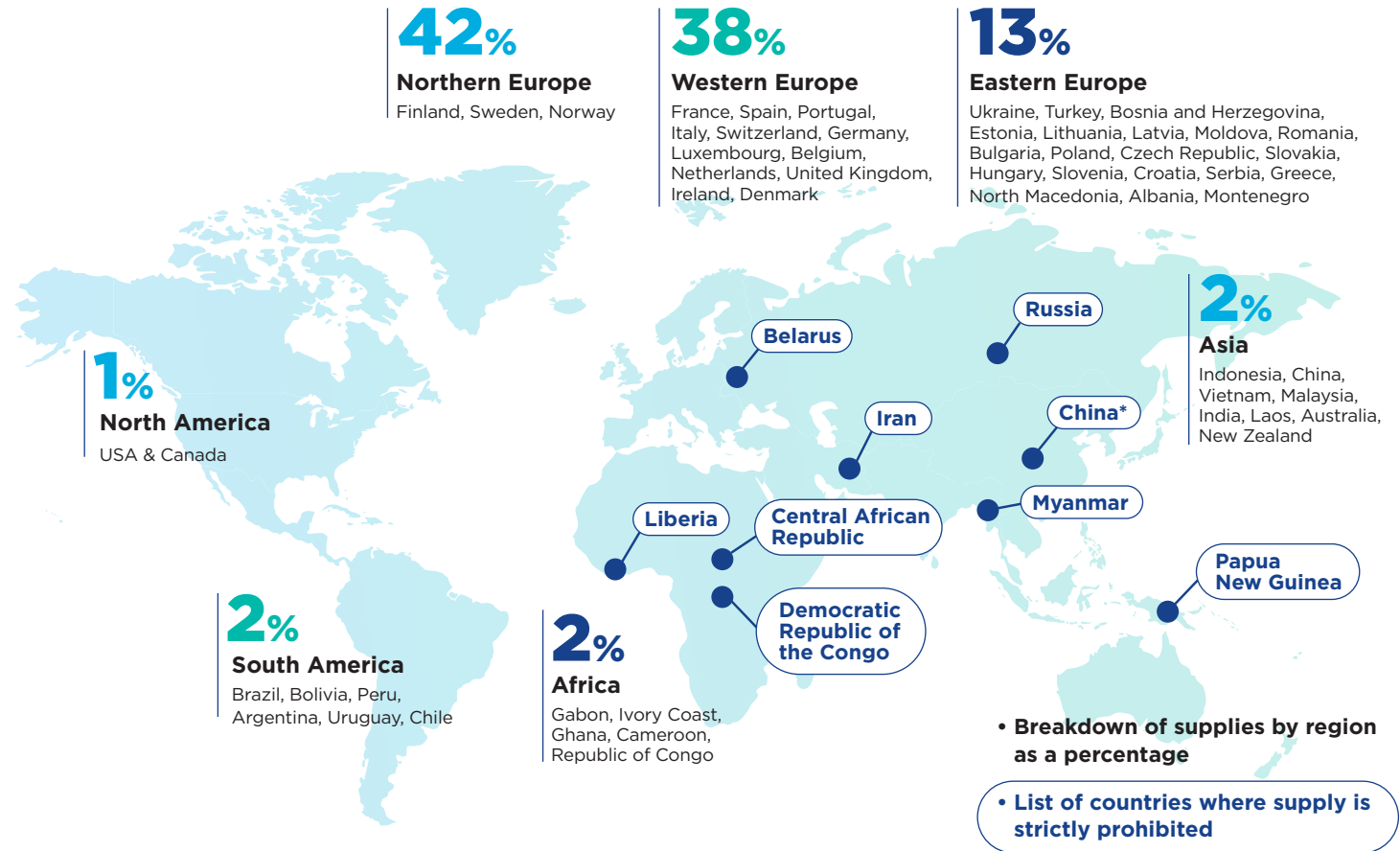
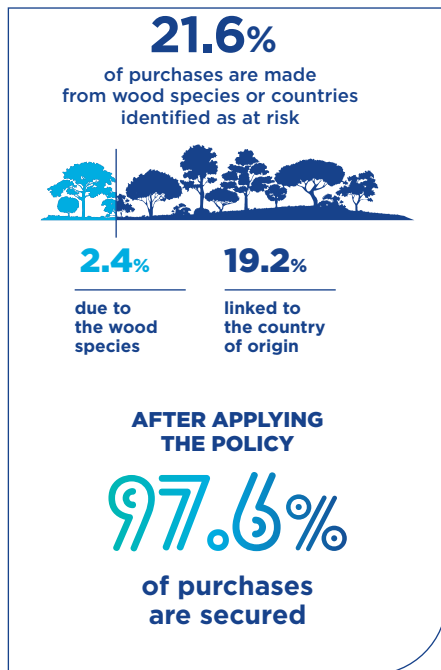
The Policies are based on international conventions, national and international regulatory frameworks, best practices in forest management, and the advice of external expert organizations on the preservation of forest ecosystems.

\*In accordance with the OECD Due Diligence Guidance for Responsible Business Conduct



# OUR ACTION PLAN

## TIMBER



For timber purchases, we define a list of countries and species for which sourcing is strictly prohibited. For species, the list is based on the IUCN\*\* Red List of Threatened Species and CITES\*\*\* lists. Certain species may be subject to a voluntary ban.

Regarding **countries of supply**, we take several international indicators into account in order to determine the level of risk

\*For all tropical wood products  
 \*\*IUCN: International Union for Conservation of Nature  
 \*\*\*CITES: Convention on International Trade in Endangered Species of Wild Fauna and Flora  
 The data presented covers the Group's trading and construction activities



In order to manage the risk associated with **wood species**, the Group maintains active monitoring and works to anticipate the phase-out of certain species ahead of the market to offer more sustainable alternatives. For example, the Group has banned the purchase of wenge, whose poaching in its natural environment had given rise to an illegal trade. This proactive approach enables us to effectively fight deforestation and forest conversion, while ensuring a responsible alternative offer and accelerating the evolution of the industry through suitable alternatives.

Thus, depending on the country and wood species risk, in order to ensure the compliance of the forest ecosystems from which our supplies originate, we rely on recognized certifications such as FSC® and PEFC, with priority given to FSC® for risk areas.



## SUPPORTING THE SECTOR

In 2018, following multiple investigations into wood species from Brazil, Saint-Gobain decided to purchase only FSC®-certified products. That year, only three suppliers were able to meet this requirement. A little more than two years later, around 30 additional suppliers had begun the certification process.

As part of a continuous improvement approach, Saint-Gobain is committed to open dialogue with its stakeholders. For example, its trading activities in France, mainly concerned with timber supplies, sit on the board of directors of FSC France in order to actively participate in the development of the sector.



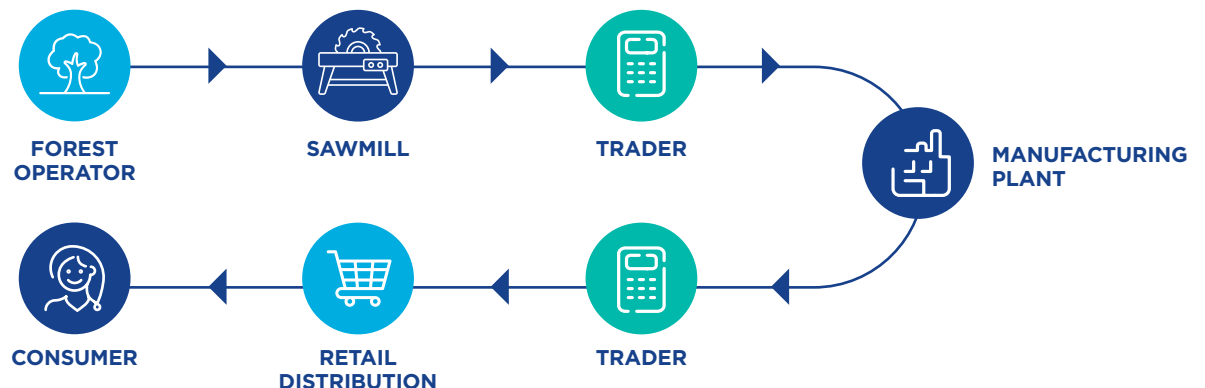
## OUR PRACTICES IN ACTION

### ENSURING VALUE CHAIN TRACEABILITY IN FRANCE

#### FSC®/PEFC chain of custody

France accounts for 60% of timber purchases. With 180 sites in France, the Group's trading activities represent the largest trading network with dual FSC®/PEFC Chain of Custody certification. Chain of Custody certification is a guarantee of the commitment of the brands concerned to the traceability and responsibility of the wood-based products they sell, in particular DISPANO and POINT.P in France. It is monitored by the

timber experts of the trading brands and has an impact on the daily operations of the agencies. In concrete terms, this involves ongoing training for teams on traceability and responsibility issues, processes for identifying products at each stage of their life cycle in the agency, from receipt to sale, and an annual third-party audit of these requirements. This ability to sell certified products to our customers has become a differentiating factor, something they expect, and a concrete manifestation of the Group's commitment.



### BUILDING STRONG PARTNERSHIPS

Our employees are also committed to preserving forests through skills-based sponsorship. We recently formed a partnership with Île-de-France Nature to support their maintenance activities, particularly the management of invasive species through weeding operations.





## WOOD PULP

For the supply of wood fibre-based products, Saint-Gobain prioritizes the use of recycled fibres.

For some technical paper purchases, where it is more difficult to integrate recycled material and which require the purchase of products made from virgin wood fiber, the approach is similar to that for timber and we rely on recognized certifications to verify the responsible management of forests.



### OUR PRACTICES IN ACTION

#### ACTING ON RESOURCES: REDUCING AND RECYCLING

With regard to paper use, suppliers have developed recycling channels over many years in the main countries where the Group operates.

Specific equipment has been implemented to better clean the fibers and improve the quality of recycling, while sorting lines have been progressively strengthened.

These advances have enabled the Gypsum business to achieve nearly 100% recycled fiber in the manufacture



of paper liners\* for plasterboard, with an exact rate of 99.2%.

At the same time, long-standing efforts have been made to improve the quality of recycled fibers, allowing for a reduction in paper weight. This optimization contributes to a more responsible use of resources by limiting material consumption while ensuring the same level of product performance and quality.

\* Paper covering the plasterboard

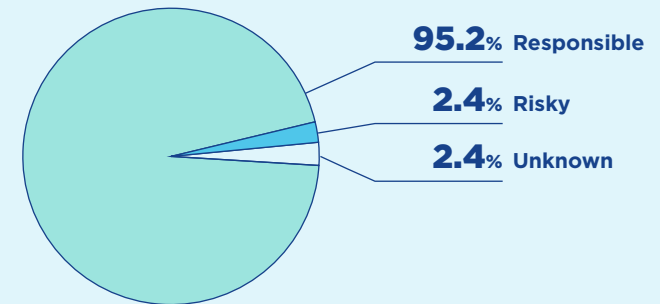
## OUR RESULTS

### MEASURED PROGRESS

#### TIMBER

A **timber inventory** is carried out every year to ensure rigorous monitoring of our supplies.

Of the 97.6% of products traced within the Group's activities (responsible and risky), 2.4% comply with the legal framework but are exposed to ethical, social, and environmental risks in our value chains and are therefore subject to specific action plans.



#### WOOD PULP

Regarding **wood pulp**, the proportion of recycled material and the country of origin of the recycled fiber are monitored in order to gradually improve the traceability of this material.