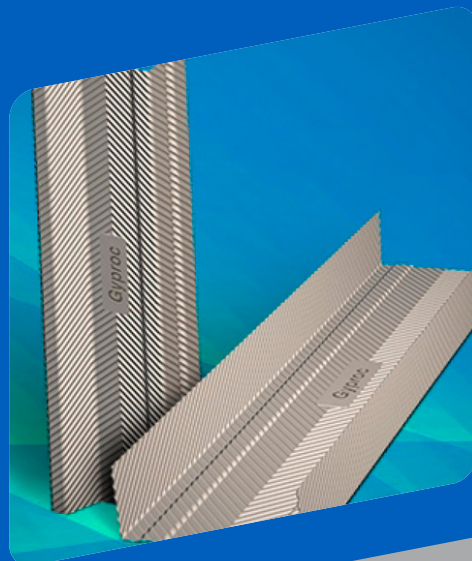


# GYPSERRA™

Extra strong metal frames



## SUSTAINABILITY

### BETTER FOR PEOPLE



- Galvanized biocide free profiles



- Easy to cut on site
- Supplied in coils and not in long bulk

### BETTER FOR THE PLANET



- 40% lighter than timber frame: 4% less lorries to transport for same volume
- Allows to reduce thickness of steel and weight of systems



- Metal optimization in manufacturing
- 100% recyclable

## PERFORMANCE

### BETTER ECONOMIC VALUE



- Increased surface area (8% higher than plain sheet)
- Doubled steel thickness

### BETTER QUALITY



- Stronger sections due to metal hardening
- Corrosion resistance
- Taylor-made service available